

Petlibro

DOCKSTREAM 2 Smart Fountain

PLWF106, 6236106-V0002

FCC ID: 2A3DE-PLWF106

IC: 28987-PLWF106

CAN ICES-003(B)/NMB-003(B)

Model: PLWF106, 6236106

@Libro Corp. All Rights Reserved.

Manufacturer: Shenzhen Libro Technology Co., Ltd.

Address: 12/F, Tower B, GALAXY WORLD,
Yabao Road, Longgang District, Shenzhen, China

Made in China



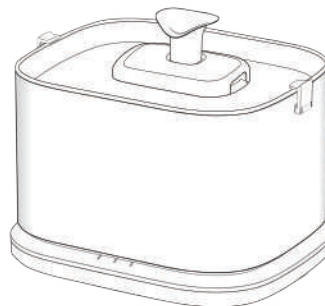
This device complies with Part 15 of the FCC Rules. Operation is subject to the following two conditions: (1) this device may not cause harmful interference, and (2) this device must accept any interference received, including interference that may cause undesired operation.

petlibro.com

PETLIBRO

USER MANUAL

DOCKSTREAM 2 Smart Fountain

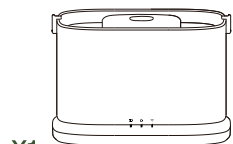


Please read this manual before using the product and keep it for future reference.

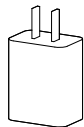
CONTENTS

IN THE BOX	01
PRODUCT OVERVIEW	02
GETTING STARTED	04
SAFETY INSTRUCTIONS	09
SPECIFICATIONS	11
WARRANTY	11
NOTICE	12
EXTERNAL POWER SUPPLY	15

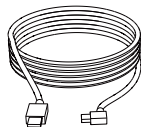
IN THE BOX



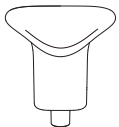
X1
Smart Fountain



X1
Power Adapter



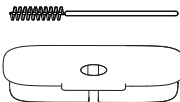
X1
Power Cable



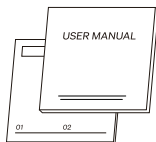
X1
Spout



X1
Water Pipe

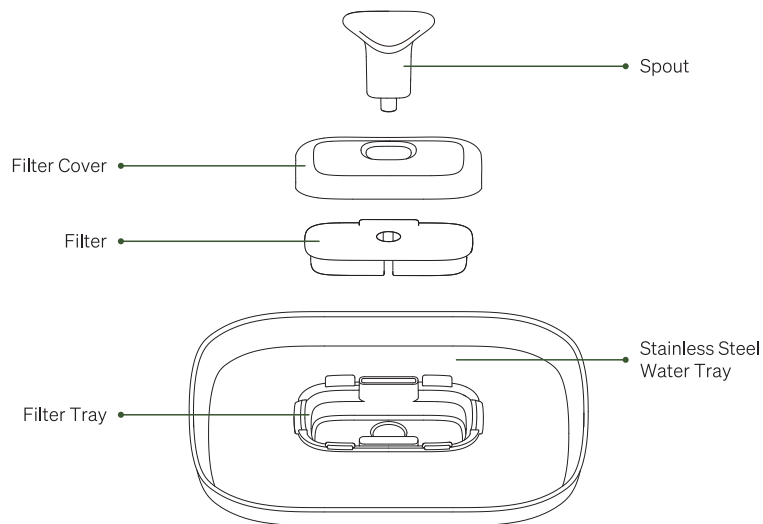


X1
Filter & Cleaning Brush

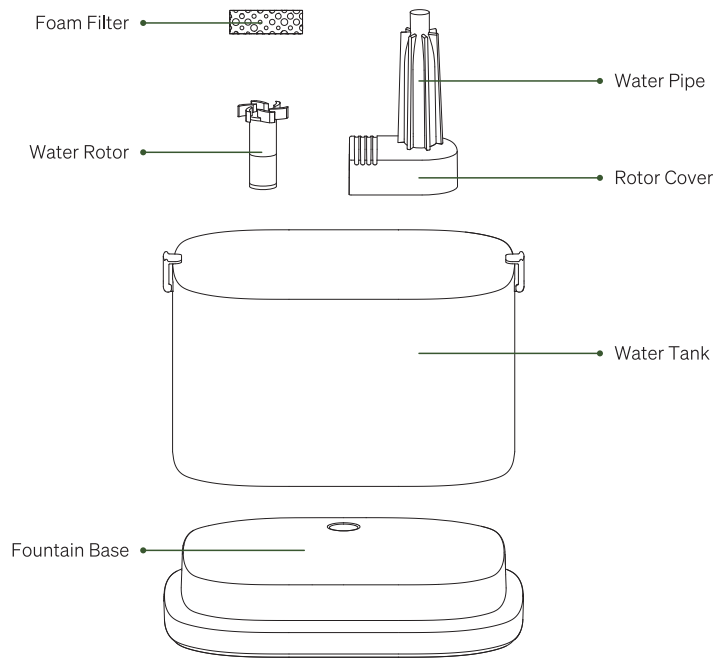


X1
User Manual

PRODUCT OVERVIEW



Warning: Stainless steel water tray and filter tray are integrated and cannot be detached.

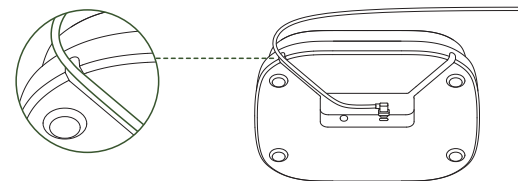


GETTING STARTED

01 / Connect

Step 01

Route the power cable through one of the cable slots on the bottom of the fountain to ensure accurate water-level monitoring.



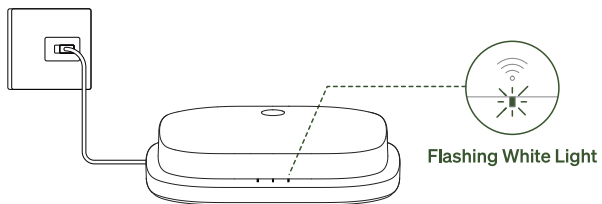
Step 02

Scan this QR code or search for "Petlibro" in your smartphone's app store to download and install the App.

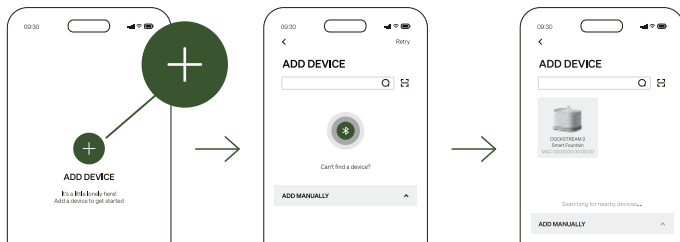


NOTE: The Petlibro Lite App is not compatible with this fountain. If you already have the Petlibro App installed, make sure you're using the latest version.

Step 03 When the Wi-Fi indicator light flashes white, the fountain is ready to connect to the App.

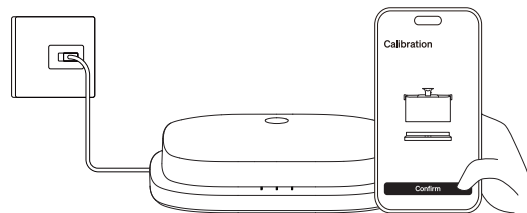


Step 04 Follow the instructions in the App to configure the network.



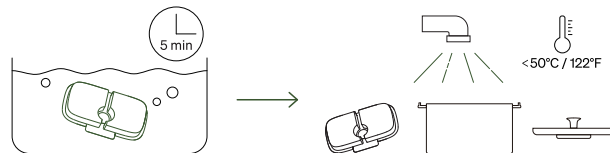
02 / Calibration

Place the empty base on a flat surface.

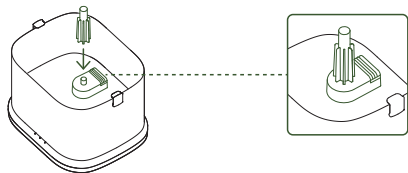


03 / Clean & Assemble

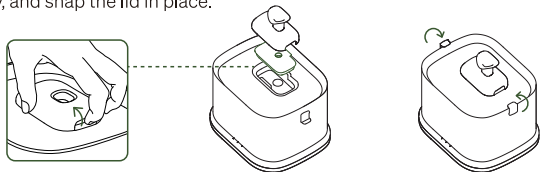
Step 01 Soak the filter in tap water for 5 minutes and rinse thoroughly, then rinse all tank parts.



Step 02 Place the water pipe inside the water tank.



Step 03 Attach the soaked filter and install the filter lid. Fill the tank with water, install the water tray, and snap the lid in place.



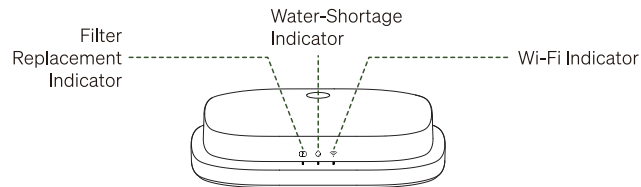
Need more support?

Get more helpful guides and video tutorials with these QR codes or contact our customer support team at support@petlibro.com



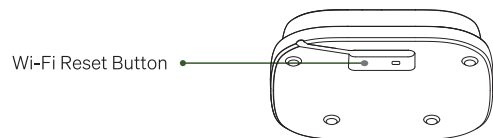
Video Tutorials


Indicator



Light	Light Status	Equipment Status
Wi-Fi Indicator	White and blinking	Bluetooth pairing; trying to connect to Wi-Fi; OTA in progress
	White and steady	Connected and running normally
	Red and blinking	Network error
	Off	No power
Water-Shortage Indicator	White and steady	Water level ok (> minimum level)
	Orange and steady	Low water (650mL-1100mL)
	Red and steady	No water (<650mL); Tank detached
Filter Replacement Indicator	Off	Filter ok (< 14 days)
	Red and steady	Replace filter (≥ 14 days)

Wi-Fi Reset



Button	How to use
 Reset Wi-Fi	Press and hold for 3 seconds to reset Wi-Fi settings. The fountain will enter network configuration mode.

SAFETY INSTRUCTIONS

- Please install and use the fountain strictly in accordance with the instructions provided.
- Use the fountain indoors only. Avoid exposure to high temperatures, high humidity, or direct sunlight.
- The fountain uses a low-voltage 5V power supply. While your pet will not receive an electric shock if they bite the cable, it may cause leakage. Position the cord to discourage chewing.

- Always use the original power adapter provided to avoid damaging the fountain or causing safety hazards.
- Place the fountain on dry, stable, level ground and keep it horizontal and upright. Overturning the fountain may cause malfunctioning or water leakage.
- Before using the fountain for the first time, please clean it thoroughly. Do not use water above 50°C.
- Do not wash or submerge the fountain's base. If the base gets wet during cleaning, wipe it dry immediately to prevent damage.
- Do not clean any parts of the fountain in a dishwasher.
Turn off the power when the fountain is not in use.
- If you don't plan to use the fountain for a long period of time, clean and dry it completely, then store it in a dry place.
- Dispose of packaging materials properly. Plastic bags can lead to suffocation—always keep them away from children and pets.
- Do not use the fountain with pets that can't reach the water tray or have physical disabilities that prevent them from using it properly.
- Always make sure there is water in the tank before using the fountain. Do not operate the fountain with an empty tank.
- Please perform any repairs under the guidance of professionals to avoid potential accidents and injuries.
- Before leaving home, check that the fountain has enough water and power to operate while you're out.
- This fountain is not intended to replace human care. For their safety, pets should not be left unattended for extended periods of time.
- For best results, clean the water tank and internal parts every week, and replace the filter every week.
- To provide the best possible experience, the fountain will be regularly upgraded and optimized. Some features may differ from what is described in this manual. If you have any questions, contact our customer support team at support@petlibro.com.

SPECIFICATIONS

Model	PLWF106, 6236106
Power Adapter	Input: AC 100–240V 50/60Hz Output: 5V 1A
Water Tank Capacity	3L (101 oz)
Wireless Frequency	2.4 GHz & 5 GHz
Supported Systems	Android, iOS
Material	ABS, Stainless Steel
Dimensions	246 × 200 × 198mm / 9.6 × 7.8 × 7.7in
Weight	1.77 kg / 3.90 lb

WARRANTY

- 24-month warranty
- For guidance on product use, please contact our customer service team at support@petlibro.com.

NOTICE

FCC Statement

This device complies with Part 15 of the FCC Rules. Operation is subject to the following two conditions:

- This device may not cause harmful interference.
- This device must accept any interference received, including interference that may cause undesired operation.

NOTE: This equipment has been tested and found to comply with the limits for a Class B digital device, pursuant to Part 15 of the FCC Rules. These limits are designed to provide reasonable protection against harmful interference in a residential installation. This equipment generates, uses and can radiate radio frequency energy and, if not installed and used in accordance with the instructions, may cause harmful interference to radio communications. However, there is no guarantee that interference will not occur in a particular installation.

If this equipment does cause harmful interference to radio or television reception, which can be determined by turning the equipment off and on, the user is encouraged to try to correct the interference by one or more of the following measures:

- Reorient or relocate the receiving antenna.
- Increase the separation between the equipment and receiver.
- Connect the equipment into an outlet on a circuit different from that to which the receiver is connected.
- Consult the dealer or an experienced radio/TV technician for help.

This device contains licence-exempt transmitter(s)/receiver(s) that comply with Innovation, Science and Economic Development Canada's licence-exempt RSS(s). Operation is subject to the following two conditions:

- This device may not cause interference.

- This device must accept any interference, including interference that may cause undesired operation of the device.

Changes or modifications to this unit not expressly approved by the party responsible for compliance could void the user's authority to operate the equipment.

This equipment complies with FCC's and IC's RF radiation exposure limits set forth for an uncontrolled environment. The antenna(s) used for this transmitter must be installed and operated to provide a separation distance of at least 20 cm from all persons and must not be collocated or operated in conjunction with any other antenna or transmitter. Installers must ensure that 20cm separation distance will be maintained between the device (excluding its handset) and users.

WEEE Disposal and Recycling Information

All products bearing this symbol are waste electrical and electronic equipment (WEEE as in directive 2012/19/EU) which should not be mixed with unsorted household waste. Instead, you should protect human health and the environment by handing over your waste equipment to a designated collection point for the recycling of waste electrical and electronic equipment, appointed by the government or local authorities. Correct disposal and recycling will help prevent potential negative consequences to the environment and human health. Please contact the installer or local authorities for more information about the location as well as terms and conditions of such collection points.

Legal Disclaimer Notice

This legal disclaimer applies to purchasers and users of products manufactured by or on behalf of Shenzhen Libro Technology Co., Ltd. and its affiliates (collectively, "Petlibro").

Unless otherwise expressly indicated in writing, Petlibro's products and instructions relating thereto are subject to change without notice. Users should check for and obtain the latest relevant information and verify that such information is current and complete before placing orders for Petlibro products.

Unless Petlibro has explicitly designated an individual Petlibro product as meeting the requirements of a particular industry standard or a particular qualification, Petlibro is not responsible for any failure of an individual Petlibro product to meet the requirements of such industry standard or

particular qualification.

The purchasers and users of Petlibro products are recommended to check the product label or USER MANUAL prior to using any of our products. If there are any discrepancies, customers should follow the information provided in the product or packaging. You should contact the manufacturer directly for any clarification relating to the product and recommended use. Unless expressly and specifically approved in writing by Petlibro on a case-by-case basis, use of any Petlibro products in unauthorized applications might not be safe and thus is at the user's sole risk.

To the maximum extent permitted by applicable law, Petlibro disclaims (i) any and all liability for special, punitive, consequential, incidental or indirect damages or lost revenues or lost profits, and (ii) any and all implied warranties, including implied warranties of fitness for particular purpose, non-infringement and merchantability.

EXTERNAL POWER SUPPLY

This fountain should only be used with the provided power cable and power adapter.

Model list	
US	TPA-418G050100UU01
EU	TPA-418K050100VU01
UK	TPA-418K050100BU01
JP	TPA-418G050100PU01
AU	TPA-418K050100SU01