



PETLIBRO.COM

PETLIBRO®

Petlibro

DOCKSTREAM Smart Fountain

Model: PLWF105, 6236105

©PETLIBRO All Rights Reserved

Manufacturer: Shenzhen Libro Technology Co., Ltd.

Address: Room 501, West Tower, Twin Towers, Galaxy World, No. 8 Yaxing Road, Nankeng Community, Bantian Street, Longgang District, Shenzhen, China

Made in China

PLWF105, 6236105-V0006

Model: PLWF105, 6236105

USER MANUAL

DOCKSTREAM Smart Fountain



FCC ID: 2A3DE-PLWF105 IC: 28987-PLWF105 CAN ICES-003 (B)/NMB-003(B)

This device complies with Part 15 of the FCC Rules. Operation is subject to the following two conditions: (1) this device may not cause harmful interference, and (2) this device must accept any interference received, including interference that may cause undesired operation.

Please read this manual before using the product and keep it for future reference. Alternatively, open the PETLIBRO app and go to DEVICE SETTINGS > Instructions for the digital manual and instructional video.

LEGAL DISCLAIMER NOTICE

This legal disclaimer applies to purchasers and users of products manufactured by or on behalf of Shenzhen Libro Technology Co., Ltd. and its affiliates (collectively, "Petlibro").

Unless otherwise expressly indicated in writing, Petlibro' s products and instructions relating thereto are subject to change without notice. Users should check for and obtain the latest relevant information and verify that such information is current and complete before placing orders for Petlibro products.

Unless Petlibro has explicitly designated an individual Petlibro product as meeting the requirements of a particular industry standard or a particular qualification, Petlibro is not responsible for any failure of an individual Petlibro product to meet the requirements of such industry standard or particular qualification.

The purchasers and users of Petlibro product are recommended to check the product label or USER MANUAL prior to using any of our products. If there are any discrepancies customers should follow the information provided in the product or packaging. You should contact the manufacturer directly for any clarification relating to the product and recommended use. Unless expressly and specifically approved in writing by Petlibro on a case- by-case basis, use of any Petlibro products in unauthorized applications might not be safe and thus is at the user' s sole risk.

To the maximum extent permitted by applicable law, Petlibro disclaims (i) any and all liability for special, punitive, consequential, incidental or indirect damages or lost revenues or lost profits, and (ii) any and all implied warranties, including implied warranties of fitness for particular purpose, non-infringement and merchantability.

Contents

/ English

Safety Instructions	01
Warranty	02
Notice	03
External Power Supply	05
In the Box	05
Product Overview	06
Getting Started	09
App Control	11
Specifications	12

/ 日本語

安全上の注意事項	13
保証	14
同梱物	15
製品概要	16
はじめに	19
アプリ制御	22
仕様	23

English

Safety Instructions

- Use the fountain in a dry place.
- Use the fountain on a level surface.
- Dispose of **all** packaging materials properly. Some items may be packed in plastic bags; these bags could cause suffocation. Keep them away from children and pets.
- Do not use the water fountain with pets that are not able to reach the water tray or with any physical disability.
- Do not immerse the base part in water at any time as it may damage electronic components.
- Do not use the fountain outdoors. Check its operation frequently to be sure it is operating properly.
- Do not disassemble the fountain other than as instructed in this user manual.
- Only use accessories recommended or sold by the manufacturer. The use of accessories not recommended or sold by the manufacturer may cause an unsafe condition.
- Do not modify the fountain.
- Examine the fountain after installation. Do not plug in if there is water on the power cable or plug.
- To avoid tripping, always position the power cable out of the way of foot traffic.
- Do not install or store the fountain where it will be exposed to weather or temperatures below 0°C (32°F).
- Do not use the fountain without adding water first.
- Power off the device when it's not in use.
- This appliance can be used by children aged from 8 years and above and persons with reduced physical, sensory or mental capabilities or lack of experience and knowledge if they have been given supervision or instruction concerning use of the appliance in a safe way and understand the hazards involved. Children shall not play with the appli-

ance. Cleaning and user maintenance shall not be made by children without supervision.

- The appliance is only to be used with the power supply unit provided with the appliance.
- If the cord set is damaged, it must be replaced by a special cord set available from the manufacturer or its service agent.

Warranty

- 24-month warranty
- For guidance on product use, please contact our customer service team via email: support@petlibro.com.

Notice

FCC statement

This device complies with Part 15 of the FCC Rules. Operation is subject to the following two conditions:

- (1) This device may not cause harmful interference, and
- (2) This device must accept any interference received, including interference that may cause undesired operation.

NOTE: This equipment has been tested and found to comply with the limits for a Class B digital device, pursuant to Part 15 of the FCC Rules. These limits are designed to provide reasonable protection against harmful interference in a residential installation. This equipment generates, uses and can radiate radio frequency energy and, if not installed and used in accordance with the instructions, may cause harmful interference to radio communications. However, there is no guarantee that interference will not occur in a particular installation.

If this equipment does cause harmful interference to radio or television reception, which can be determined by turning the equipment off and on, the user is encouraged to try to correct the interference by one or more of the following measures:

- Reorient or relocate the receiving antenna.
- Increase the separation between the equipment and receiver.
- Connect the equipment into an outlet on a circuit different from that to which the receiver is connected.
- Consult the dealer or an experienced radio/TV technician for help.

This device contains licence-exempt transmitter(s)/receiver(s) that comply with Innovation, Science and Economic Development Canada's licence-exempt RSS(s). Operation is subject to the following two conditions:

(1) This device may not cause interference.

(2) This device must accept any interference, including interference that may cause undesired operation of the device.

Changes or modifications to this unit not expressly approved by the party responsible for compliance could void the user's authority to operate the equipment.

This equipment complies with FCC's and IC's RF radiation exposure limits set forth for an uncontrolled environment. The antenna(s) used for this transmitter must be installed and operated to provide a separation distance of at least 20 cm from all persons and must not be collocated or operating in conjunction with any other antenna or transmitter. Installers must ensure that 20cm separation distance will be maintained between the device (excluding its handset) and users.

WEEE Disposal and Recycling Information

All products bearing this symbol are waste electrical and electronic equipment (WEEE as in directive 2012/19/EU) which should not be mixed with unsorted household waste. Instead, you should protect human health and the environment by handing over your waste equipment to a designated collection point for the recycling of waste electrical and electronic equipment, appointed by the government or local authorities. Correct disposal and recycling will help prevent potential negative consequences to the environment and human health. Please contact the installer or local authorities for more information about the location as well as terms and conditions of such collection points.

External Power Supply

Only to be used with the power supply unit provided with the appliance.

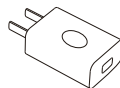
Model list:

US: TPA-46B050100UU	TPA-418G050100UU01
EU: TPA-147K050100VU01	TPA-67B050100VU01
TPA-46050100VU	TPA-418K050100VU01
UK: TPA-38A050100BU01	TPA-418K050100BU01
JP: TPA-95A050100UU01	TPA-98B050100PU01
TPA-418G050100PU01	
AU: TPA-418K050100SU01	TPA-147C050100SU01

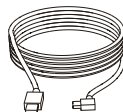
In the Box



1 x Automatic
Pet Water Fountain



1 x Power Adapter

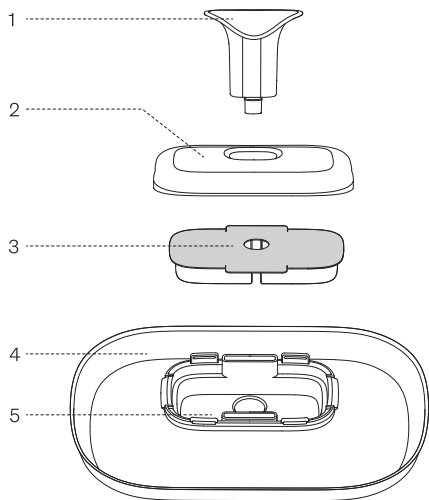


1 x Power Cable



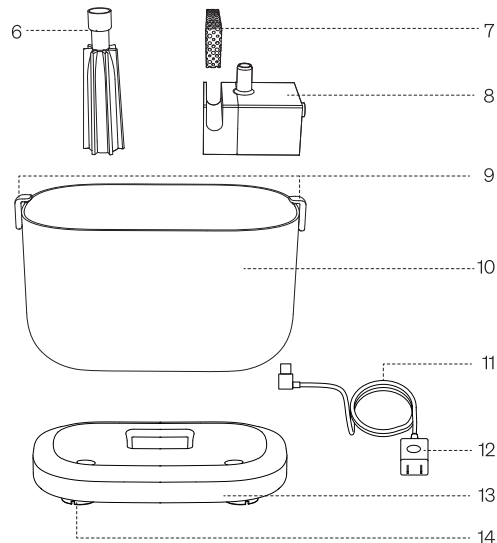
1 x User Manual

Product Overview



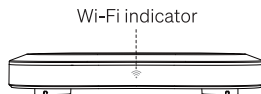
- 1. Spout
- 2. Filter Lid
- 3. Filter
- 4. Stainless Steel Water Tray
- 5. Filter Tray

Warning: Components 4 and 5 are integrated and cannot be detached.



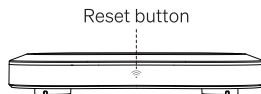
- 6. Water Pipe
- 7. Foam Filter
- 8. Wireless Water Pump
- 9. Snap Lids
- 10. Water Tank
- 11. Power Cable
- 12. Power Adapter
- 13. Tank Base
- 14. Load Cell Sensor


Indicator



Indicator Status	Device Status
Flashes orange once every second	Network configuration mode
Orange light	Wi-Fi is connected
Flashes red and orange once every half a second	Network connection failed
Flashes red once every second	Firmware update
Off	The water fountain is powered off

Button

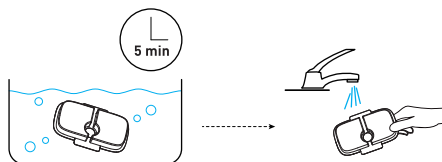


Button	Operation Status
 Reset	After the fountain is connected to Wi-Fi, press and hold for six seconds to reset Wi-Fi settings. The fountain will enter network configuration mode.

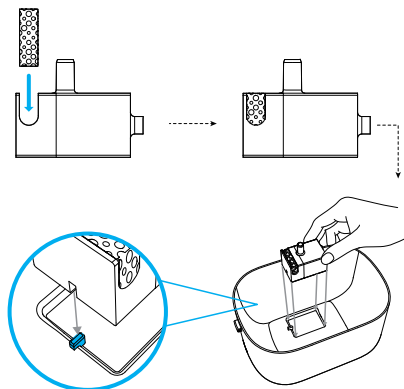
Getting Started

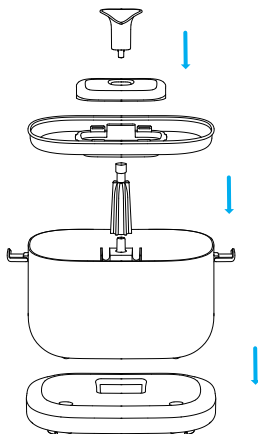
Installation

1. Soak the filter in a clean bowl of water for five minutes, then rinse the filter thoroughly with tap water.



2. Install the water fountain and filter.

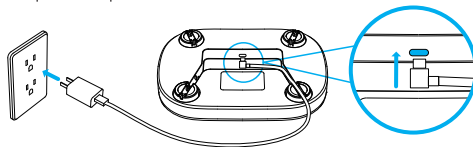




Note: Scan the QR code above to watch the video for product installation and cleaning.

Power on

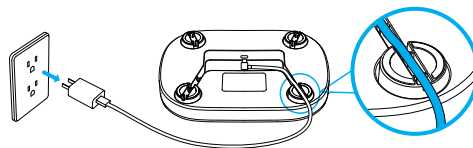
Connect the fountain to a wall outlet with the power adapter and power cable.



Please route the cable through one of the cable slots on the bottom of the fountain for accurate water level monitoring.

Power off

Unplug the cable from the outlet.

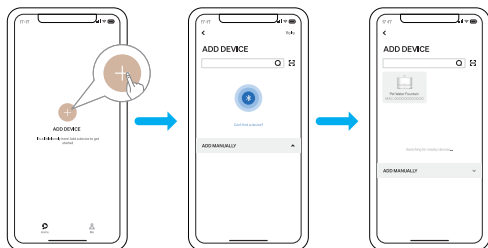


App Control

1. Download and install the PETLIBRO app.



2. Follow the instructions to configure the network.



Specifications

Model	PLWF105
Power Adapter	Input: AC 100–240V 50/60Hz Output: DC 5V 1A
Water Tank Capacity	2.5L
Wireless Frequency	2.4GHz
Supported Systems	Android, iOS
Material	ABS, stainless steel
Dimensions	231 × 191 × 161 mm 9.1 × 7.5 × 6.3 in
Weight	858g / 1.9lb

日本語

安全上の注意事項

- 給水器は乾燥した場所で使用してください。
- 給水器は水平面上で使用してください。
- すべての梱包材は適切に廃棄してください。一部の品目はビニール袋に詰められている場合があります。これらの袋は窒息を引き起こす可能性があります。子供やペットには近づけないようにしてください。
- ウォータトレイに口が届かないペットや身体に障害のあるペットには給水器を使用しないでください。
- 電子部品が破損することがありますので、台座部分を水に浸さないでください。
- 給水器は屋外で使用しないでください。動作を頻繁にチェックして、正しく動作していることを確認してください。
- このユーザーマニュアルに記載されている以外の方法で給水器を分解しないでください。
- メーカーが推奨または販売しているアクセサリのみを使用してください。メーカーが推奨または販売していないアクセサリを使用すると、危険な状態になることがあります。
- 給水器は改造しないでください。
- 設置後に給水器を検査してください。電源ケーブルやプラグに水がついている場合は、プラグを差し込まないでください。
- つまづきを避けるために、電源ケーブルは常に人の往来の邪魔にならない位置に置いてください。
- 給水器は、0°C (32°F) 以下の天候や温度にさらされる場所に設置または保管しないでください。
- 給水器は、最初に水を加えてから使用してください。
- 本機を使用していないときは、本機の電源をオフにしてください。

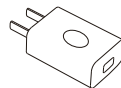
保証

- 24ヶ月保証
- 本機の使用法については、カスタマーサービスチームまで次のメールアドレスにお問い合わせください: support@petlibro.com

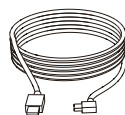
同梱物



自動ペット給水器x1個



電源アダプターx1個

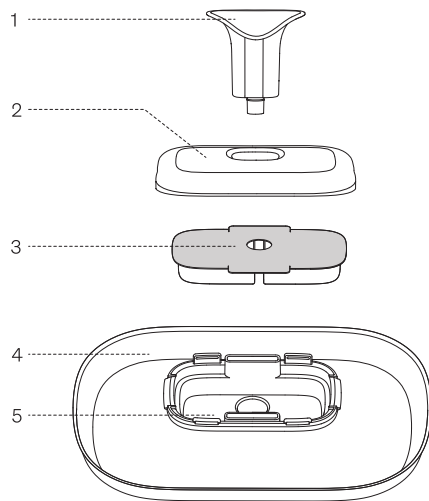


電源ケーブルx1個



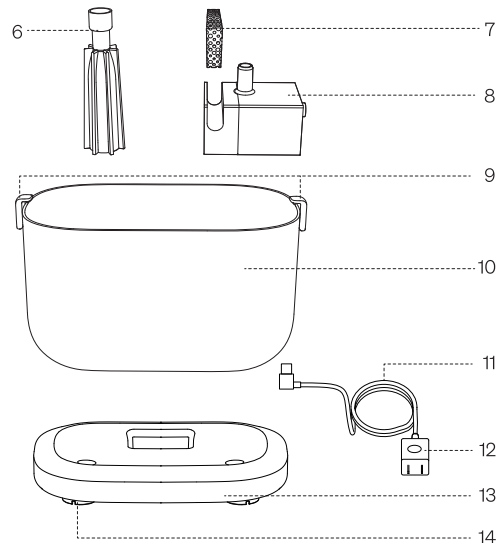
ユーザーマニュアルx1個

製品概要



- | | |
|-----------|-------------------|
| 1. 給水口 | 4. ステンレス製ウォータートレイ |
| 2. フィルター蓋 | 5. フィルタートレイ |
| 3. フィルター | |

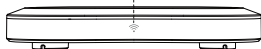
注：構成部品4と5は一体化されており、取り外すことはできません。



- | | |
|------------------|-------------|
| 6. ウォータパイプ | 10. ウォータタンク |
| 7. フォームフィルター | 11. 電源ケーブル |
| 8. ワイヤレスウォーターポンプ | 12. 電源アダプター |
| 9. スナップ蓋 | 13. タンクベース部 |
| | 14. 荷重センサー |

表示

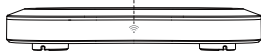
Wi-Fi表示




表示の状態	デバイスの状態
1秒ごとに1回オレンジ点滅	ネットワーク設定モード
オレンジ点灯	Wi-Fiが接続されている
0.5秒に1回、赤色とオレンジが点滅する	ネットワーク接続に失敗しました
1秒ごとに1回赤色点滅	ファームウェア更新中
消灯	給水器の電源がオフになっている

ボタン

リセットボタン

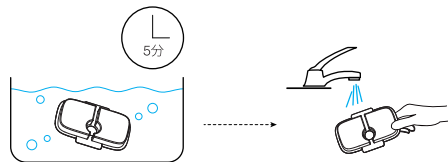


ボタン	動作状態
 リセット	給水器がWi-Fiに接続されたのち、6秒間長押ししてWi-Fi設定をリセットしてください。給水器はネットワーク設定モードに入ります。

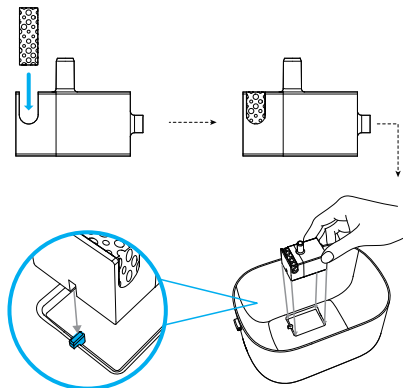
はじめに

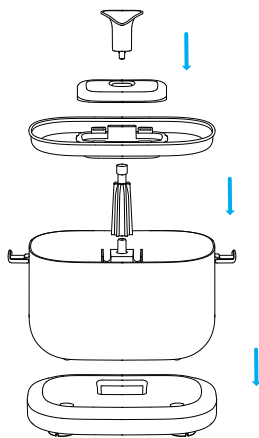
設置

1. フィルターを清潔なボウルに入れた水に5分間浸漬した後、水道水でフィルターを十分にすすいでください。



2. 給水器とフィルターを設置します。

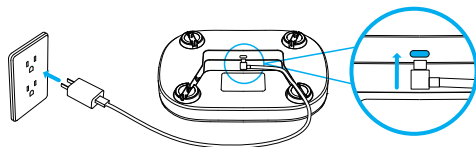




注:上記のQRコードを読み取って、本機の設置および清掃に関するビデオをご覧ください。

電源オン

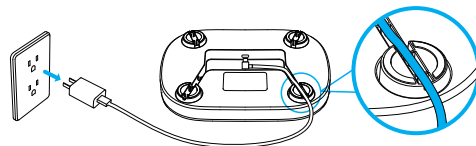
電源アダプターと電源ケーブルで、給水器を壁のコンセントに接続してください。



正確な水位のモニタリングのために、ケーブルを噴水の底部にあるケーブルスロットのうちの1つに通してください。

電源オフ

電源ケーブルをコンセントから抜いてください。

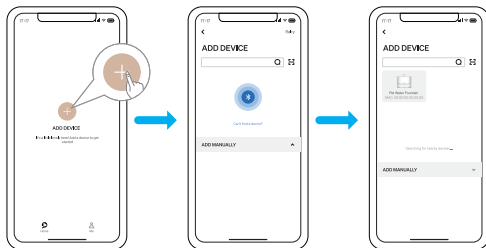


アプリ制御

1. PETLIBROアプリをダウンロードしてインストールしてください。



2. 指示に従ってネットワークを設定してください。



仕様

モデル	PLWF105
電源アダプター	入力: AC100~240V、50/60Hz 出力: DC 5V1A
ウォータータンク容量	2.5L
無線周波数	2.4GHz
サポートシステム	Android, iOS
材質	ABS樹脂、ステンレススチール
寸法	231 × 191 × 161 mm 9.1 × 7.5 × 6.3 インチ
重量	858g/1.9ポンド