



**PETLIBRO®**

# USER MANUAL

## POLAR Smart Wet Food Feeder

## Petlibro

POLAR Wet Food Feeder

Model: PLAF109

©PETLIBRO All Rights Reserved

**Manufacturer:** Shenzhen Libro Technology Co., Ltd.

**Address:** Room 501, West Tower, Twin Towers, Galaxy World, No. 8 Yaxing Road, Nankeng Community, Bantian

Street, Longgang District, Shenzhen, China

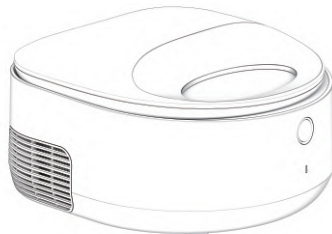
Made in China

PLAF109-V0004



CAN ICES-003 (B)/NMB-003(B) IC: 28987-PLAF109 FCC ID: 2A3DE-PLAF109

This device complies with Part 15 of the FCC Rules. Operation is subject to the following two conditions: (1) this device may not cause harmful interference, and (2) this device must accept any interference received, including interference that may cause undesired operation.



Please read this manual before using the product and keep it for future reference.

# Contents

/ English

SAFETY INSTRUCTIONS	01
WARRANTY	03
NOTICE	04
EXTERNAL POWER SUPPLY	06
IN THE BOX	07
PRODUCT OVERVIEW	08
GETTING STARTED	10
CARE AND MAINTENANCE	19
SPECIFICATIONS	23

# SAFETY INSTRUCTIONS

---

- Do not use the feeder at temperatures below 12° C (54° F) or above 30°C (86°F).
- Do not obstruct the feeder's cooling vents.
- Use the feeder in a dry place.
- Use the feeder on a level surface.
- Dispose of **all** packaging materials properly. Some items may be packed in plastic bags; these bags could cause suffocation.
- Do not use the feeder with pets that are not able to reach the food bowl or with any physical disability.
- Do not immerse the base part in water at any time as it may damage electronic components.
- Do not use the feeder outdoors. Check its operation frequently to be sure it is operating properly.
- Do not disassemble the feeder other than as instructed in this user manual.
- Only use accessories recommended or sold by the manufacturer. The use of accessories not recommended or sold by the manufacturer may cause an unsafe condition.
- Do not modify the feeder.
- Examine the feeder after installation. Do not plug in if there is water on the power cable or plug.
- To avoid tripping, always position the power cable out of the way of foot traffic.
- Power off the feeder when it's not in use.
- This appliance can be used by children aged from 8 years and above and persons with reduced physical, sensory or mental capabilities or lack of experience and knowledge if they have been given supervision or instruction concerning use of the appliance in a safe way and understand the hazards

involved. Children shall not play with the appliance. Cleaning and user maintenance shall not be made by children without supervision.

- The appliance is only to be used with the power supply unit provided with the appliance.
- If the cord set is damaged, it must be replaced by a special cord set available from the manufacturer or its service agent.

## WARRANTY

---

- 24-month warranty
- For guidance on product use, please contact our customer service team via email: [support@petlibro.com](mailto:support@petlibro.com).

## NOTICE

---

### FCC statement

This device complies with Part 15 of the FCC Rules. Operation is subject to the following two conditions:

- (1) this device may not cause harmful interference, and
- (2) this device must accept any interference received, including interference that may cause undesired operation.

**NOTE:** This equipment has been tested and found to comply with the limits for a Class B digital device, pursuant to Part 15 of the FCC Rules. These limits are designed to provide reasonable protection against harmful interference in a residential installation. This equipment generates, uses and can radiate radio frequency energy and, if not installed and used in accordance with the instructions, may cause harmful interference to radio communications. However, there is no guarantee that interference will not occur in a particular installation.

If this equipment does cause harmful interference to radio or television reception, which can be determined by turning the equipment off and on, the user is encouraged to try to correct the interference by one or more of the following measures:

- Reorient or relocate the receiving antenna.
- Increase the separation between the equipment and receiver.
- Connect the equipment into an outlet on a circuit different from that to which the receiver is connected.
- Consult the dealer or an experienced radio/TV technician for help.

This device contains licence-exempt transmitter(s)/receiver(s) that comply with Innovation, Science and Economic Development Canada's licence-exempt RSS(s). Operation is subject to the following two conditions:



- (1) This device may not cause interference.
- (2) This device must accept any interference, including interference that may cause undesired operation of the device. Changes or modifications to this unit not expressly approved by the party responsible for compliance could void the user's authority to operate the equipment.
- This equipment complies with FCC's and IC's RF radiation exposure limits set forth for an uncontrolled environment. The antenna(s) used for this transmitter must be installed and operated to provide a separation distance of at least 20 cm from all persons and must not be collocated or operating in conjunction with any other antenna or transmitter. Installers must ensure that 20cm separation distance will be maintained between the device (excluding its handset) and users.

**WEEE Disposal and Recycling Information**

All products bearing this symbol are waste electrical and electronic equipment (WEEE as in directive 2012/19/EU) which should not be mixed with unsorted household waste. Instead, you should protect human health and the environment by handing over your waste equipment to a designated collection point for the recycling of waste electrical and electronic equipment, appointed by the government or local authorities. Correct disposal and recycling will help prevent potential negative consequences to the environment and human health. Please contact the installer or local authorities for more information about the location as well as terms and conditions of such collection points.

**EXTERNAL POWER SUPPLY**

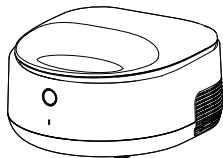
---

Only to be used with the power supply unit provided with the appliance.

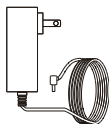
**Model list:**

US: HCX6001-1205000U	HCX6501-1205000U
HCX6503-1205000U	
EU: HCX6001-1205000E	HCX6501-1205000E
HCX6503-1205000E	
UK: HCX6001-1205000B	HCX6501-1205000B
HCX6503-1205000B	
JP: HCX6001-1205000J	HCX6501-1205000J
HCX6503-1205000J	

## IN THE BOX



1 × Automatic  
Pet Feeder



1 × Power Adapter

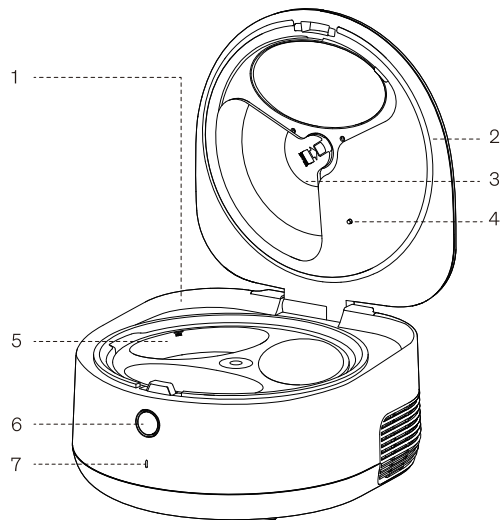


1 × Quick Start Guide



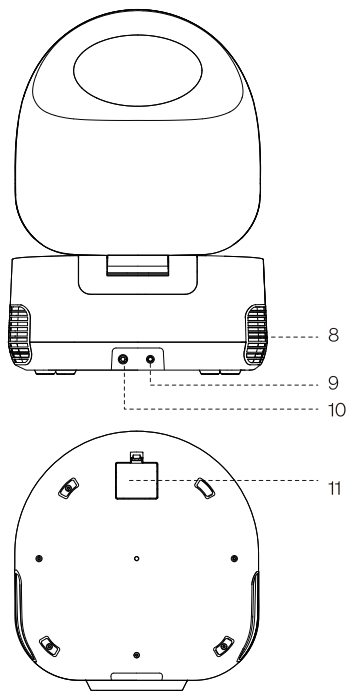
1 × User Manual

## PRODUCT OVERVIEW



- 1. Body
- 2. Top Lid
- 3. Rotating Food Section Lid
- 4. Temperature Sensor
- 5. Food Bowl

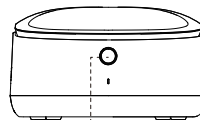
- 6. Top Lid Release Button
- 7. Status Indicator



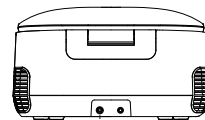
8. Cooling Vent  
9. Power Port  
10. Reset Button

11. Battery Compartment  
(Batteries not included)



## Button



Top Lid Release Button



Reset Button

Buttons	Operations
 Top Lid Release Button	Press to open the top lid
 Reset Button	Press and hold for three seconds to reset the feeder

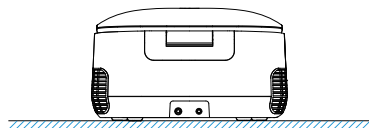
## Indicator status

Indicator Status	Device Status
Off	The feeder is powered off
Flashes white once every second	Network configuration mode
Flashes white once every half a second	Network connection or OTA update
White on	Wi-Fi is connected and the feeder is working normally
Red on	Feeder malfunction
Flashes red and white once every half a second	Network failure

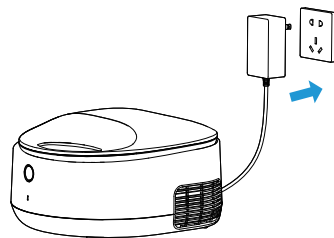
## GETTING STARTED

### Power on

1. Place the feeder on a level surface, and ensure that neither the left nor right cooling vents are obstructed by foreign objects.



2. Plug in the power cable, and the status indicator will flash white.

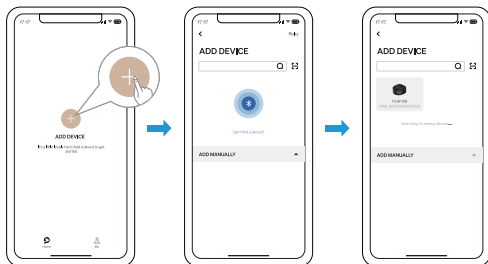


## App control

1. Scan the QR code or search in your device's app store to download and install the PETLIBRO app.



2. Follow the instructions to configure the network.



### Note:

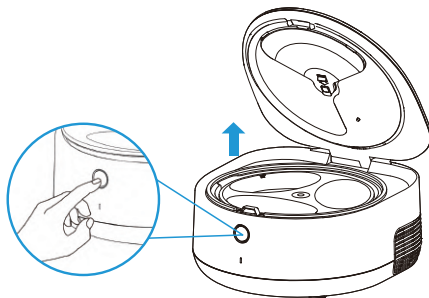
- This feeder only supports 2.4GHz networks.

## Set up the feeder

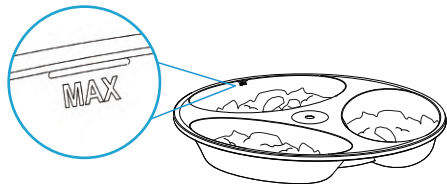
Scan the QR code to watch a video on how to use the feeder.



1. Press the top lid release button to open the top lid of the feeder.



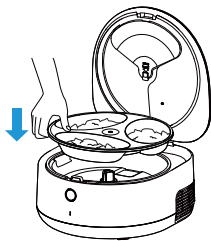
2. Take out the food bowl and add an appropriate amount of wet food to it.



**Notes:**

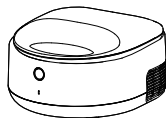
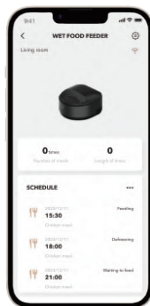
- Do not exceed the maximum food level line.
- For hot food, allow it to cool to room temperature before adding it to the feeder.

3. Put the food bowl back into the feeder.



**Note:** Place carefully to avoid spilling any liquid from the wet food into the feeder.

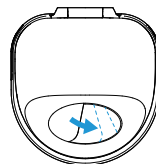
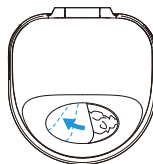
4. Set the schedule for each added wet food meal in the app and close the top lid.



**Note:**

- Please do not open the lid or change food after the feeding plans have been saved.
- The time that can be set for a single wet food meal cannot exceed 72 hours (3 days).

5. When the scheduled feeding time arrives, the rotating food section lid will open and automatically close after the pet finishes eating.

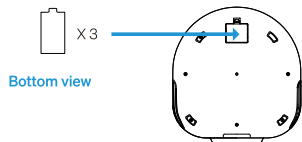


#### Note:

- By default, the rotating lid will stay open for 4 hours during feeding times. Users can adjust this duration in the settings.
- If the pet is still eating when the feeding time is over, the safety sensor will detect it and ensure that the rotating lid continues to stay open.

## Backup battery

1. The bottom of the feeder is reserved for a battery compartment. You can choose to install three AA batteries.

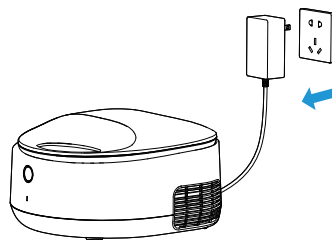


**Note: Batteries are not included.**

2. The backup batteries only work during a power failure; the refrigeration function will stop, but the feeding schedule within 8 hours will proceed as usual.

## Power off

1. When not in use for an extended period, unplug the power cable to turn off the feeder.



**Note: Remove backup batteries if they are installed.**

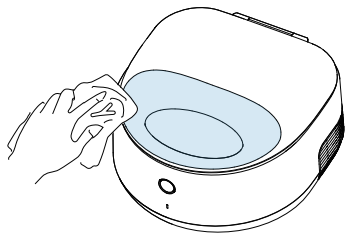
## CARE AND MAINTENANCE

Scan the QR code to watch a video on how to clean the feeder.



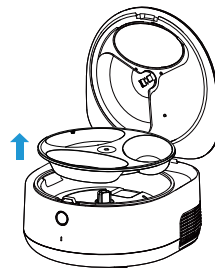
### Feeding zone cleaning

Use a dry towel to wipe and clean the feeding zone.

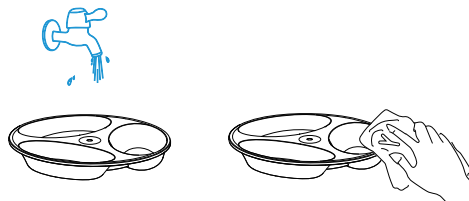


### Food bowl cleaning

1. End all feeding schedules of the feeder and remove the food bowl.



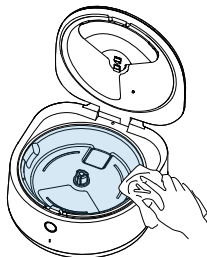
2. Clean the food bowl with water and wipe it dry.





## Refrigeration zone cleaning

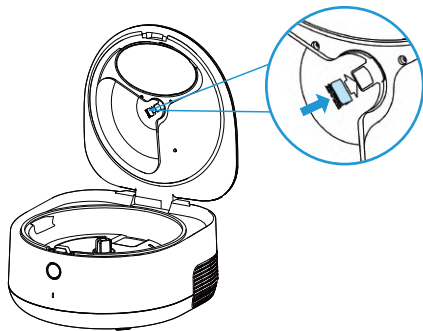
Use a dry towel to wipe and clean the refrigeration zone.



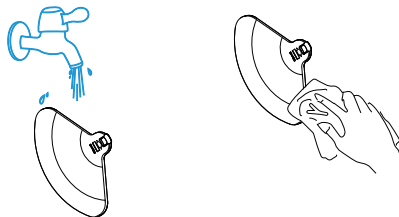
**Note:** Condensation on the bottom of the feeder is normal, and it occurs due to the refrigeration process.

## Rotating food section lid cleaning

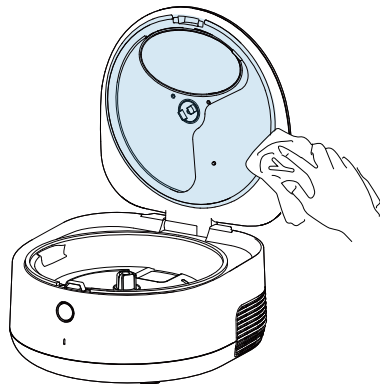
1. Release the latch to remove the rotating food section lid.



2. Clean the food section lid with water and wipe it dry.

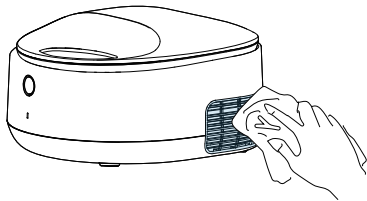


3. Use a clean towel to clean the gap between the rotating food section lid and the top lid.



## Regular Cleaning of Pet Hair from Air Inlet

The product's air inlet may accumulate cat hair. It is recommended to clean the air inlet every 7 days.



## SPECIFICATIONS

<b>Model</b>	<b>PLAF109</b>
<b>Power Adapter</b>	Input: AC 100–240V 50/60Hz Output: DC 12V 5A
<b>Number Of Meals</b>	3
<b>Wireless Frequency</b>	2.4GHz
<b>Supported Systems</b>	Android, iOS
<b>Dimensions</b> (Power adapter not included)	361 × 340 × 196mm / 14.2 × 13.4 × 7.7in
<b>Weight</b> (Power adapter not included)	3.4kg/7.5lb